




# lokal 28B

## DANE

 109,5 m<sup>2</sup>

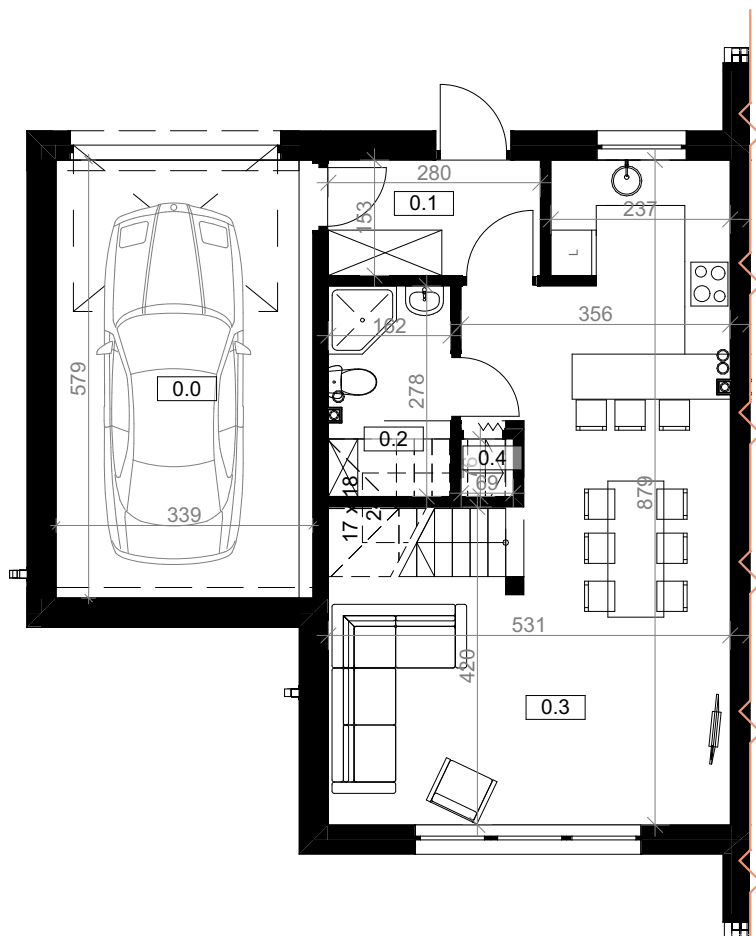
 94,7 m<sup>2</sup>

 179,6 m<sup>2</sup>

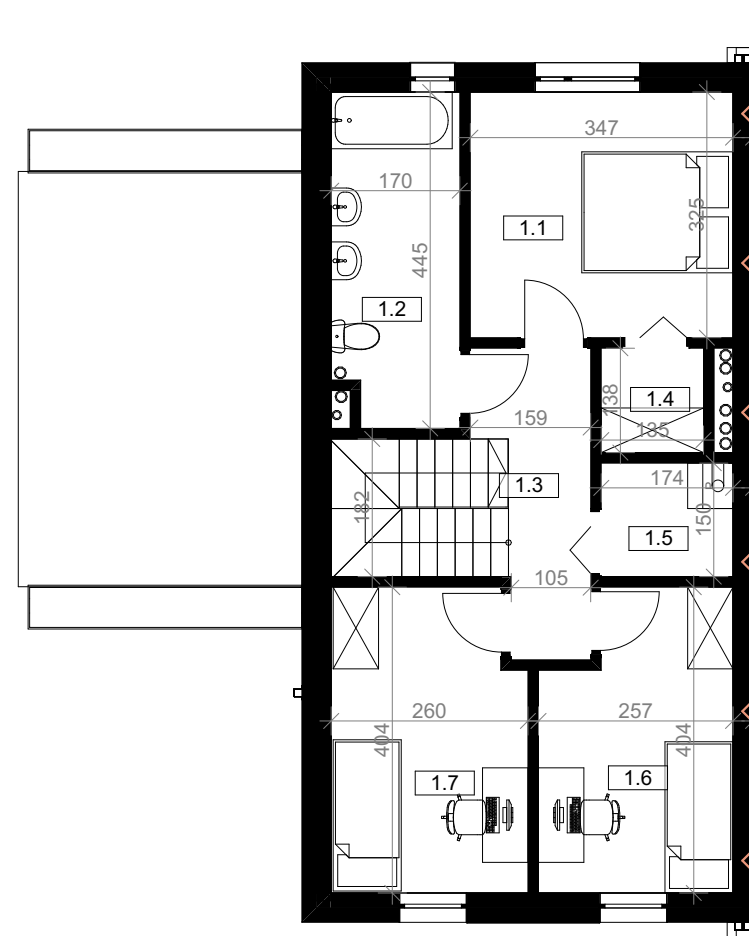
## POWIERZCHNIE

UŻYTKOWA    PODŁOGI

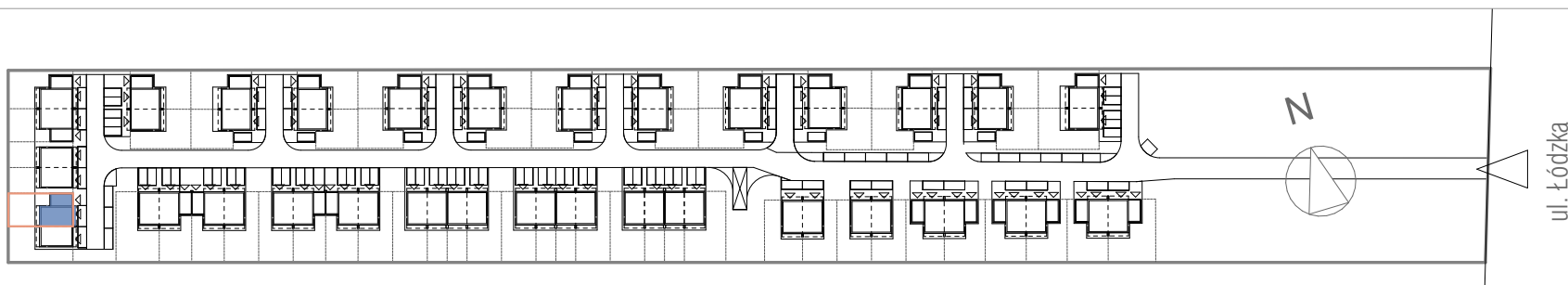
0.0	GARAŻ	19,6	19,6
0.1	KOMUNIKACJA	4,3	4,3
0.2	ŁAZIENKA	3,7	4,5
0.3	SALON + KUCHNIA	33,7	35,6
0.4	P.G.	0,5	0,5
		61,8 m <sup>2</sup>	64,5 m <sup>2</sup>
1.1	SYPIALNIA	11,3	11,3
1.2	ŁAZIENKA	7,3	7,3
1.3	KOMUNIKACJA	5,0	5,0
1.4	GARDEROBA	1,9	1,9
1.5	POM. GOSP.	2,6	2,6
1.6	POKÓJ	9,5	9,5
1.7	POKÓJ	10,1	10,1
		47,7 m <sup>2</sup>	47,7 m <sup>2</sup>
		109,5 m <sup>2</sup>	112,2 m <sup>2</sup>



RZUT PARTERU





RZUT PIĘTRA



 **DPM INVEST**  
domy pod miastem

 kontakt@dpminvest.pl

 500 877 450

 697 600 760

# FAMILY PARK